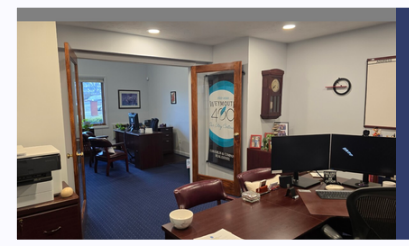


FOR LEASE

PRIME WEYMOUTH OFFICE
SPACE

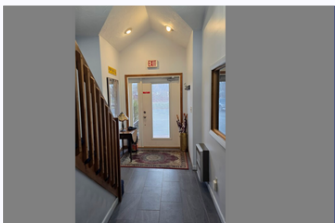


JAY NUSS
REALTY GROUP, LLC



61 Winter Street
Size: 1247 Sq Ft

Adjacent to Route 3 entrance/exit ramps
First level professional space with many recent upgrades



Large Reception/Bullpen Area
Large Executive Office/Conference Room
Executive Size Conference Room
Kitchenette
1 Private Bathroom



FLEXIBLE LEASE TERMS

For further information, please contact Jay Nuss at 781.910.6575 or
jay@jaynussrealtygroup.com